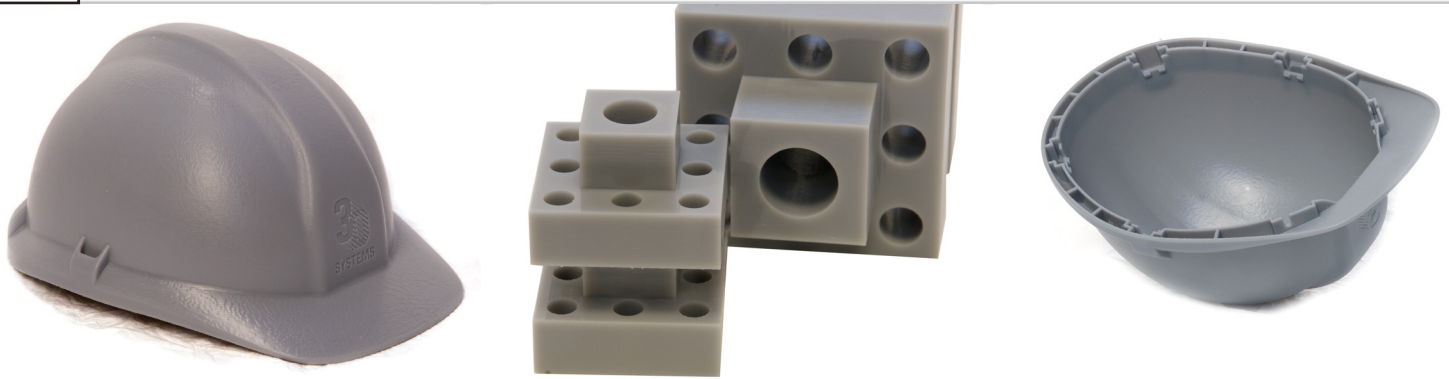


Accura® Xtreme™

Ultra tough grey plastic to replace CNC-machined polypropylene and ABS articles



Technical Data

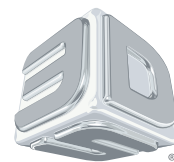
Post-Cured Material			
Measurement	Condition	Metric	U.S.
Tensile Strength (MPa/PSI)	ASTM D 638	38-44	5510-6380
Tensile Modulus (MPa/KSI)	ASTM D 638	1790-1980	260-287
Elongation at Break	ASTM D 638	14-22 %	14-22 %
Flexural Strength (MPa/PSI)	ASTM D 790	57-71	7540-10300
Flexural Modulus (MPa/KSI)	ASTM D 790	1520-2070	220-300
Impact Strength (J/m /Ft-lbs/in)	ASTM D 256	35-52	0.66-0.98
Heat Deflection Temperature	ASTM D 648 @ 66 PSI	62 °C	144 °F
	@ 264 PSI	54 °C	129 °F
Glass Transition (Tg)		70-74 °C	158-165 °F

Liquid Material

Measurement	Condition	Value
Viscosity	@ 30 °C (86 °F)	250-300 cps
Penetration Depth (Dp)		4.1 mils
Critical Exposure (Ec)		11.7 mJ/cm ²
Color		Grey
Solid Density	@ 25 °C (77 °F)	1.19 g/cm ³
Liquid Density	@ 28 °C (82 °F)	1.13 g/cm ³
Tested Build Styles		EXACT™

Features

- Tough and durable
- Resists breakage and handles challenging functional assemblies
- Great for snap fits, assemblies and demanding applications
- Ideal for master patterns for vacuum casting



BDSYSTEMS®

3D Systems Corporation Tel: +1 803.326.3900
333 Three D Systems Circle NYSE: DDD
Rock Hill, SC 29730, USA www.3dsystems.com

MANUFACTURING THE FUTURE

Warranty/Disclaimer: The performance characteristics of these products may vary according to product application, operating conditions, or with end use. 3D Systems makes no warranties of any type, express or implied, including, but not limited to, the warranties of merchantability or fitness for a particular use.